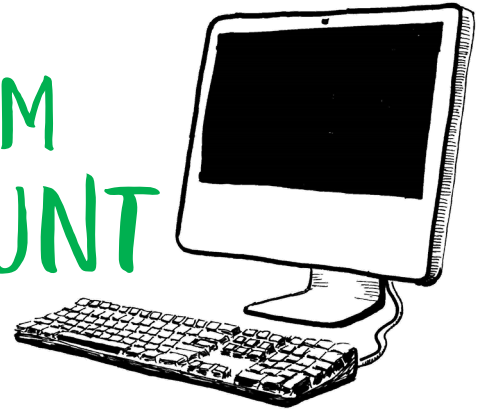




VIRTUAL MUSEUM SCAVENGER HUNT



Musee d'Orsay, Paris, France

The French Art of the Musee d'Orsay

Welcome to the Musee d'Orsay Scavenger Hunt! This museum is located in Paris, France. In its past life, it was a railway station until 1939. During World War II, the French used it as a mailing station. Today, it holds French art from 1848 to 1914. The French wanted to create a museum that had pieces that other museums did not have room for.

Quick Fun Facts about the museum!

- ✓ This museum has the largest collection of impressionist masterpieces
- ✓ It was the first museum in France to have a photography exhibition
- ✓ 35,000 Square Meters of the building is made of glass
- ✓ It took 6 months to place all of the paintings and art into the museum
- ✓ It is one of the largest art museums in Europe.
- ✓ It has more metal than the Eiffel Tower

Start by going to this link: <https://artsandculture.google.com/partner/musee-dorsay-paris?hl=en>

Part One:

1. You will need to select Canvas. Find the painting titled "Self Portrait".
 - a. Can you tell me when the piece was painted?
 - b. Can you tell me who painted it?
2. Return to the home page through the link above. Then select Modern Art. Find the painting called "Magpie".
 - a. What season is portrayed in the painting?
 - b. Who painted it?
3. Return to the homepage through the link above. Then select France. Search for the painting called "The circle of the Rue Royale".
 - a. Can you count how many people are in the painting?
4. Return to the homepage through the link above. Select Post-Impressionism. Find the painting called "The Circus".
 - a. Can you see what year it was painted?
 - b. Can you tell me what animal is in the painting?
5. Return to the homepage through the link above. Then select Oil Painting. Search for the painting called "The Bellelli Family".
 - a. What was used to paint this painting?
 - b. Who created this painting?

Part Two:

Return to the homepage through the link above. Select the online exhibit and read “From Station to the Renovated Musee d’Orsay”

1. Who was commissioned to design the railway station?
2. How many workers worked during the day? How many worked during the night?
3. When did they start building the station? When did they finish?
4. During the 1970’s what else was d’Orsay used as?
5. What year did d’Orsay open as a museum?



*At Girl Scouts, we use art as a way to learn and express ourselves.
Visit www.gsmw.org/virtual for more activities!*

